

**FIRST FLOOR WINDOW SCHEDULE**

NO.	STYLE	WIDTH	HEIGHT	SHUTTER	PROTECTION	MATERIAL	MANUFACTURER	SERIES	REMARKS
101	FIXED GLASS	3'-0"	5'-0"			ALUM			TOP @ 5'-0" A.F.F.
102	FIXED GLASS	3'-0"	5'-0"			ALUM			TOP @ 5'-0" A.F.F.
103	FIXED GLASS	3'-0"	5'-0"			ALUM			TOP @ 5'-0" A.F.F.
104	FIXED GLASS	2'-0"	3'-0"			ALUM			TOP @ 5'-0" A.F.F.
105	FIXED GLASS	2'-0"	3'-0"			ALUM			TOP @ 5'-0" A.F.F.
106	FIXED GLASS	2'-0"	3'-0"			ALUM			TOP @ 5'-0" A.F.F.
107	FIXED GLASS	2'-0"	3'-0"			ALUM			TOP @ 5'-0" A.F.F.
108	FIXED GLASS	2'-0"	3'-0"			ALUM			TOP @ 5'-0" A.F.F.
109	FIXED GLASS	2'-0"	3'-0"			ALUM			TOP @ 5'-0" A.F.F.
110	FIXED GLASS	2'-0"	3'-0"			ALUM			TOP @ 5'-0" A.F.F.
111	FIXED GLASS	2'-0"	3'-0"			ALUM			TOP @ 5'-0" A.F.F.
112	FIXED GLASS	2'-0"	3'-0"			ALUM			TOP @ 5'-0" A.F.F.
113	FIXED GLASS	2'-0"	3'-0"			ALUM			TOP @ 5'-0" A.F.F.
114	FIXED GLASS	2'-0"	3'-0"			ALUM			TOP @ 5'-0" A.F.F.
115	FIXED GLASS	2'-0"	3'-0"			ALUM			TOP @ 5'-0" A.F.F.
116	FIXED GLASS	2'-0"	3'-0"			ALUM			TOP @ 5'-0" A.F.F.
117	FIXED GLASS	2'-0"	3'-0"			ALUM			TOP @ 5'-0" A.F.F.
118	FIXED GLASS	2'-0"	3'-0"			ALUM			TOP @ 5'-0" A.F.F.
119	FIXED GLASS	2'-0"	3'-0"			ALUM			TOP @ 5'-0" A.F.F.
120	FIXED GLASS	2'-0"	3'-0"			ALUM			TOP @ 5'-0" A.F.F.
121	FIXED GLASS	2'-0"	3'-0"			ALUM			TOP @ 5'-0" A.F.F.
122	FIXED GLASS	2'-0"	3'-0"			ALUM			TOP @ 5'-0" A.F.F.
123	FIXED GLASS	2'-0"	3'-0"			ALUM			TOP @ 5'-0" A.F.F.
124	FIXED GLASS	2'-0"	3'-0"			ALUM			TOP @ 5'-0" A.F.F.
125	FIXED GLASS	2'-0"	3'-0"			ALUM			TOP @ 5'-0" A.F.F.
126	FIXED GLASS	2'-0"	3'-0"			ALUM			TOP @ 5'-0" A.F.F.
127	FIXED GLASS	2'-0"	3'-0"			ALUM			TOP @ 5'-0" A.F.F.
128	FIXED GLASS	2'-0"	3'-0"			ALUM			TOP @ 5'-0" A.F.F.
129	FIXED GLASS	2'-0"	3'-0"			ALUM			TOP @ 5'-0" A.F.F.
130	FIXED GLASS	2'-0"	3'-0"			ALUM			TOP @ 5'-0" A.F.F.
131	FIXED GLASS	2'-0"	3'-0"			ALUM			TOP @ 5'-0" A.F.F.
132	FIXED GLASS	2'-0"	3'-0"			ALUM			TOP @ 5'-0" A.F.F.
133	FIXED GLASS	2'-0"	3'-0"			ALUM			TOP @ 5'-0" A.F.F.
134	FIXED GLASS	2'-0"	3'-0"			ALUM			TOP @ 5'-0" A.F.F.
135	FIXED GLASS	2'-0"	3'-0"			ALUM			TOP @ 5'-0" A.F.F.
136	FIXED GLASS	2'-0"	3'-0"			ALUM			TOP @ 5'-0" A.F.F.
137	FIXED GLASS	2'-0"	3'-0"			ALUM			TOP @ 5'-0" A.F.F.
138	FIXED GLASS	2'-0"	3'-0"			ALUM			TOP @ 5'-0" A.F.F.
139	FIXED GLASS	2'-0"	3'-0"			ALUM			TOP @ 5'-0" A.F.F.
140	FIXED GLASS	2'-0"	3'-0"			ALUM			TOP @ 5'-0" A.F.F.
141	FIXED GLASS	2'-0"	3'-0"			ALUM			TOP @ 5'-0" A.F.F.
142	FIXED GLASS	2'-0"	3'-0"			ALUM			TOP @ 5'-0" A.F.F.
143	FIXED GLASS	2'-0"	3'-0"			ALUM			TOP @ 5'-0" A.F.F.
144	FIXED GLASS	2'-0"	3'-0"			ALUM			TOP @ 5'-0" A.F.F.
145	FIXED GLASS	2'-0"	3'-0"			ALUM			TOP @ 5'-0" A.F.F.
146	FIXED GLASS	2'-0"	3'-0"			ALUM			TOP @ 5'-0" A.F.F.
147	FIXED GLASS	2'-0"	3'-0"			ALUM			TOP @ 5'-0" A.F.F.
148	FIXED GLASS	2'-0"	3'-0"			ALUM			TOP @ 5'-0" A.F.F.
149	FIXED GLASS	2'-0"	3'-0"			ALUM			TOP @ 5'-0" A.F.F.
150	FIXED GLASS	2'-0"	3'-0"			ALUM			TOP @ 5'-0" A.F.F.

**FIRST FLOOR WINDOW SCHEDULE**

NO.	STYLE	WIDTH	HEIGHT	SHUTTER	PROTECTION	MATERIAL	MANUFACTURER	SERIES	REMARKS
101	FIXED GLASS	3'-0"	5'-0"			ALUM			TOP @ 5'-0" A.F.F.
102	FIXED GLASS	3'-0"	5'-0"			ALUM			TOP @ 5'-0" A.F.F.
103	FIXED GLASS	3'-0"	5'-0"			ALUM			TOP @ 5'-0" A.F.F.
104	FIXED GLASS	2'-0"	3'-0"			ALUM			TOP @ 5'-0" A.F.F.
105	FIXED GLASS	2'-0"	3'-0"			ALUM			TOP @ 5'-0" A.F.F.
106	FIXED GLASS	2'-0"	3'-0"			ALUM			TOP @ 5'-0" A.F.F.
107	FIXED GLASS	2'-0"	3'-0"			ALUM			TOP @ 5'-0" A.F.F.
108	FIXED GLASS	2'-0"	3'-0"			ALUM			TOP @ 5'-0" A.F.F.
109	FIXED GLASS	2'-0"	3'-0"			ALUM			TOP @ 5'-0" A.F.F.
110	FIXED GLASS	2'-0"	3'-0"			ALUM			TOP @ 5'-0" A.F.F.
111	FIXED GLASS	2'-0"	3'-0"			ALUM			TOP @ 5'-0" A.F.F.
112	FIXED GLASS	2'-0"	3'-0"			ALUM			TOP @ 5'-0" A.F.F.
113	FIXED GLASS	2'-0"	3'-0"			ALUM			TOP @ 5'-0" A.F.F.
114	FIXED GLASS	2'-0"	3'-0"			ALUM			TOP @ 5'-0" A.F.F.
115	FIXED GLASS	2'-0"	3'-0"			ALUM			TOP @ 5'-0" A.F.F.
116	FIXED GLASS	2'-0"	3'-0"			ALUM			TOP @ 5'-0" A.F.F.
117	FIXED GLASS	2'-0"	3'-0"			ALUM			TOP @ 5'-0" A.F.F.
118	FIXED GLASS	2'-0"	3'-0"			ALUM			TOP @ 5'-0" A.F.F.
119	FIXED GLASS	2'-0"	3'-0"			ALUM			TOP @ 5'-0" A.F.F.
120	FIXED GLASS	2'-0"	3'-0"			ALUM			TOP @ 5'-0" A.F.F.
121	FIXED GLASS	2'-0"	3'-0"			ALUM			TOP @ 5'-0" A.F.F.
122	FIXED GLASS	2'-0"	3'-0"			ALUM			TOP @ 5'-0" A.F.F.
123	FIXED GLASS	2'-0"	3'-0"			ALUM			TOP @ 5'-0" A.F.F.
124	FIXED GLASS	2'-0"	3'-0"			ALUM			TOP @ 5'-0" A.F.F.
125	FIXED GLASS	2'-0"	3'-0"			ALUM			TOP @ 5'-0" A.F.F.
126	FIXED GLASS	2'-0"	3'-0"			ALUM			TOP @ 5'-0" A.F.F.
127	FIXED GLASS	2'-0"	3'-0"			ALUM			TOP @ 5'-0" A.F.F.
128	FIXED GLASS	2'-0"	3'-0"			ALUM			TOP @ 5'-0" A.F.F.
129	FIXED GLASS	2'-0"	3'-0"			ALUM			TOP @ 5'-0" A.F.F.
130	FIXED GLASS	2'-0"	3'-0"			ALUM			TOP @ 5'-0" A.F.F.
131	FIXED GLASS	2'-0"	3'-0"			ALUM			TOP @ 5'-0" A.F.F.
132	FIXED GLASS	2'-0"	3'-0"			ALUM			TOP @ 5'-0" A.F.F.
133	FIXED GLASS	2'-0"	3'-0"			ALUM			TOP @ 5'-0" A.F.F.
134	FIXED GLASS	2'-0"	3'-0"			ALUM			TOP @ 5'-0" A.F.F.
135	FIXED GLASS	2'-0"	3'-0"			ALUM			TOP @ 5'-0" A.F.F.
136	FIXED GLASS	2'-0"	3'-0"			ALUM			TOP @ 5'-0" A.F.F.
137	FIXED GLASS	2'-0"	3'-0"			ALUM			TOP @ 5'-0" A.F.F.
138	FIXED GLASS	2'-0"	3'-0"			ALUM			TOP @ 5'-0" A.F.F.
139	FIXED GLASS	2'-0"	3'-0"			ALUM			TOP @ 5'-0" A.F.F.
140	FIXED GLASS	2'-0"	3'-0"			ALUM			TOP @ 5'-0" A.F.F.
141	FIXED GLASS	2'-0"	3'-0"			ALUM			TOP @ 5'-0" A.F.F.
142	FIXED GLASS	2'-0"	3'-0"			ALUM			TOP @ 5'-0" A.F.F.
143	FIXED GLASS	2'-0"	3'-0"			ALUM			TOP @ 5'-0" A.F.F.
144	FIXED GLASS	2'-0"	3'-0"			ALUM			TOP @ 5'-0" A.F.F.
145	FIXED GLASS	2'-0"	3'-0"			ALUM			TOP @ 5'-0" A.F.F.
146	FIXED GLASS	2'-0"	3'-0"			ALUM			TOP @ 5'-0" A.F.F.
147	FIXED GLASS	2'-0"	3'-0"			ALUM			TOP @ 5'-0" A.F.F.
148	FIXED GLASS	2'-0"	3'-0"			ALUM			TOP @ 5'-0" A.F.F.
149	FIXED GLASS	2'-0"	3'-0"			ALUM			TOP @ 5'-0" A.F.F.
150	FIXED GLASS	2'-0"	3'-0"			ALUM			TOP @ 5'-0" A.F.F.

NOTE:  
ALL OR ANY AREAS BELOW BASE FLOOR ELEVATION SHALL BE FINISHED WITH DRYWALL SHALL BE FINISHED WITH TREATED LUMBER AND FINISHED WITH DURECOCK. PLACE OF DRYWALL ALL WET AREAS SUCH AS SHOWER OR TUB DECKS SHALL BE DURECOCK.

NOTE:  
THIS STRUCTURE SHALL COMPLY WITH FBC 2014. THAT STATES WHEN APPLYING A WATER BASED SUPPORT INSULATION ABOVE A CEILING, THE MINIMUM GYPSUM BOARD THICKNESS SHALL BE 1/2" 94-RESISTANT OR 5/8" GYPSUM CEILING BOARD TO ENSURE THAT ALUM. JOIST ENCLASURE MEETS OR EXCEEDS THE RESIDENTIAL SWIMMING POOL SAFETY ACT, AS DOCUMENTED IN FLORIDA STATUTES SEC. 515.21 - 515.37.

NOTE:  
GARAGE TO RESIDENCE SEPARATION IS TO BE OR 1 3/8" THICK METAL DOOR. 80 MINUTE RATED OR 1 3/8" THICK SOLID WOOD DOOR BETWEEN GARAGE AND LIVING SPACE TO PROVIDE IN ACCORDANCE WITH 2014 FLORIDA BUILDING CODE-RESIDENTIAL, SECTION R302.5

NOTE:  
ACCEPTANCE PRIOR TO WINDOW AND DOOR INSPECTION CURRENT STATE OF FLORIDA PRODUCT NOTICE OF SHUTTERS, WINDOW MANUF. AND CONTRACTOR TO PROVIDE WITH APPROVED IMPACT RESISTANT ASSEMBLIES OR ALL DOORS AND WINDOWS ARE TO BE PROTECTED

NOTE:  
ACCEPTANCE PRIOR TO WINDOW AND DOOR INSPECTION CURRENT STATE OF FLORIDA PRODUCT NOTICE OF SHUTTERS, WINDOW MANUF. AND CONTRACTOR TO PROVIDE WITH APPROVED IMPACT RESISTANT ASSEMBLIES OR ALL DOORS AND WINDOWS ARE TO BE PROTECTED

NOTE:  
ACCEPTANCE PRIOR TO WINDOW AND DOOR INSPECTION CURRENT STATE OF FLORIDA PRODUCT NOTICE OF SHUTTERS, WINDOW MANUF. AND CONTRACTOR TO PROVIDE WITH APPROVED IMPACT RESISTANT ASSEMBLIES OR ALL DOORS AND WINDOWS ARE TO BE PROTECTED

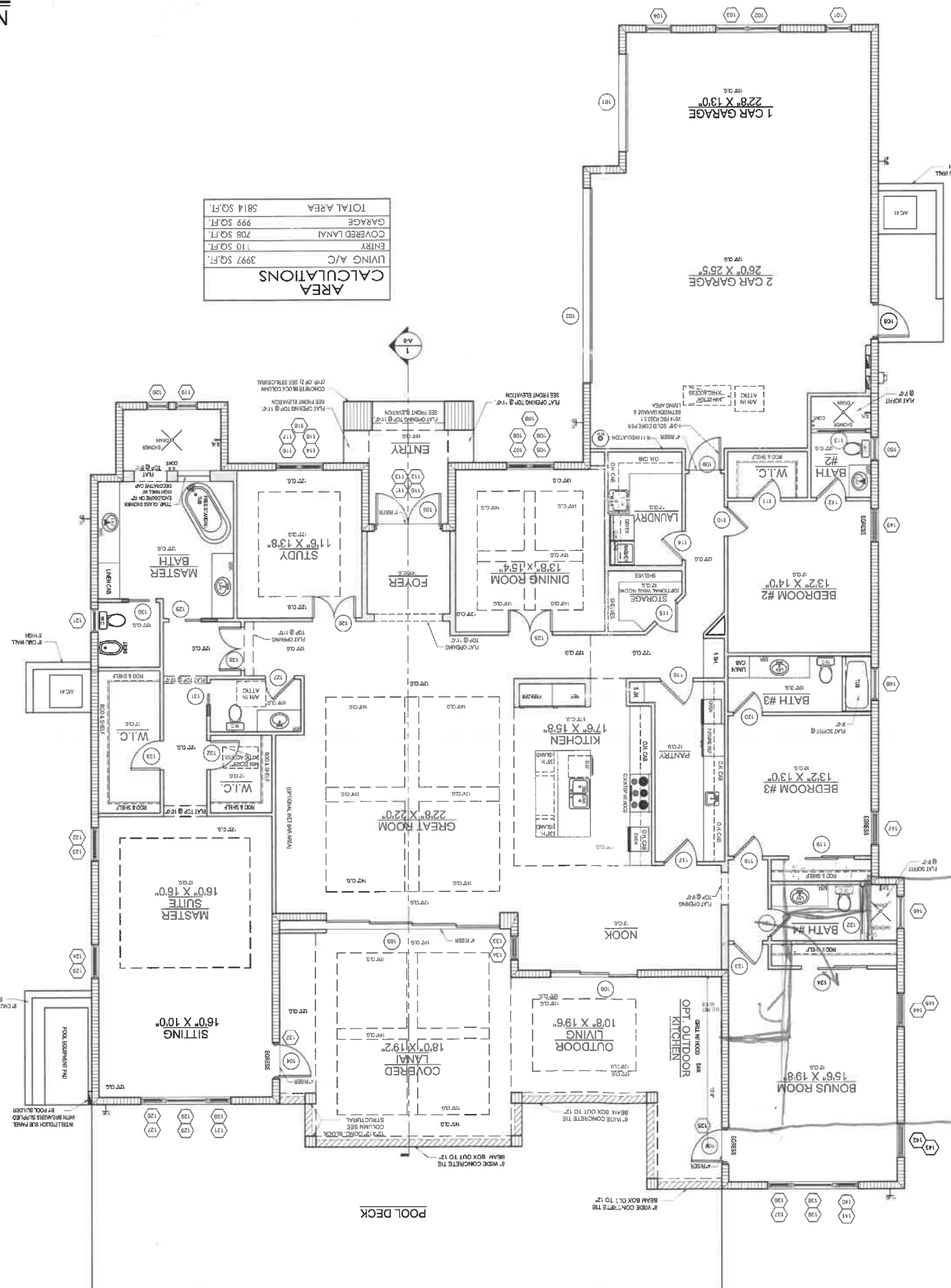
NOTE:  
ACCEPTANCE PRIOR TO WINDOW AND DOOR INSPECTION CURRENT STATE OF FLORIDA PRODUCT NOTICE OF SHUTTERS, WINDOW MANUF. AND CONTRACTOR TO PROVIDE WITH APPROVED IMPACT RESISTANT ASSEMBLIES OR ALL DOORS AND WINDOWS ARE TO BE PROTECTED

NOTE:  
ACCEPTANCE PRIOR TO WINDOW AND DOOR INSPECTION CURRENT STATE OF FLORIDA PRODUCT NOTICE OF SHUTTERS, WINDOW MANUF. AND CONTRACTOR TO PROVIDE WITH APPROVED IMPACT RESISTANT ASSEMBLIES OR ALL DOORS AND WINDOWS ARE TO BE PROTECTED

NOTE:  
ACCEPTANCE PRIOR TO WINDOW AND DOOR INSPECTION CURRENT STATE OF FLORIDA PRODUCT NOTICE OF SHUTTERS, WINDOW MANUF. AND CONTRACTOR TO PROVIDE WITH APPROVED IMPACT RESISTANT ASSEMBLIES OR ALL DOORS AND WINDOWS ARE TO BE PROTECTED

NOTE:  
ACCEPTANCE PRIOR TO WINDOW AND DOOR INSPECTION CURRENT STATE OF FLORIDA PRODUCT NOTICE OF SHUTTERS, WINDOW MANUF. AND CONTRACTOR TO PROVIDE WITH APPROVED IMPACT RESISTANT ASSEMBLIES OR ALL DOORS AND WINDOWS ARE TO BE PROTECTED

NOTE:  
ACCEPTANCE PRIOR TO WINDOW AND DOOR INSPECTION CURRENT STATE OF FLORIDA PRODUCT NOTICE OF SHUTTERS, WINDOW MANUF. AND CONTRACTOR TO PROVIDE WITH APPROVED IMPACT RESISTANT ASSEMBLIES OR ALL DOORS AND WINDOWS ARE TO BE PROTECTED



**AREA CALCULATIONS**

LIVING A/C	3997 SQ.FT.
ENTRY	110 SQ.FT.
COVERED LANAI	708 SQ.FT.
GARAGE	999 SQ.FT.
TOTAL AREA	5814 SQ.FT.



NOTED FLOOR PLAN

A-2

Viola "D" Left  
Isles of Collier Lot 519

Stock Architecture  
DATE: INITIAL:  
2016 May 31, 2016

247 Professional Circle  
Suite 1215  
Naples, Florida 34119  
P: (239) 592-7344  
F: (239) 592-7341

**STOCK CONSTRUCTION**

DRAFTING SERVICES PROVIDED BY:  
**SOUTH FLORIDA DESIGN**  
9990 Calanui Rd., Suite 330  
Bonita Springs, FL 34135  
239.4.31.1818

